

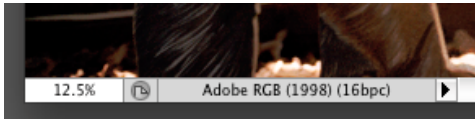
Accurate Photo Printing with Photoshop CS5 & OSX (10.6 Snow Leopard)

Before starting, be sure to do the following:

- Resize/Resample your image so that it fits on the paper and the resolution is 240ppi.
- Be sure the RGB working space in Photoshop is set to Adobe RGB (1998).
- Check that the monitor has been recently and correctly profiled.

Now for printing:

1. Check that the embedded document profile is Adobe RGB (1998) by clicking the arrow and choosing the option for **“Document Profile”** in the bottom left corner of your photoshop document window.

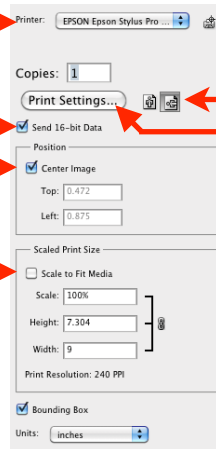


2. Go to **File > Print**. Then check these options in the Photoshop Print Window.

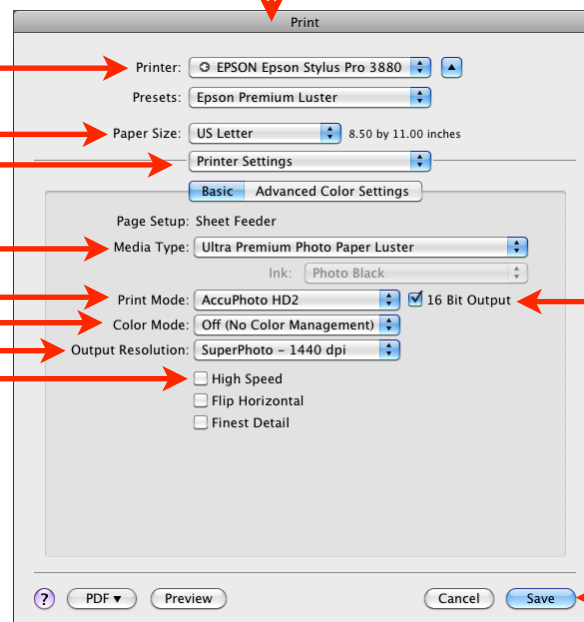
- Choose the correct printer → Printer: EPSON Epson Stylus Pro ... ← Printer Utility, use only when head cleaning

- **ON** for 16-bit files → Send 16-bit Data ← **Print Settings:** Launches the “Printer Setup” window below
- Center Image **ON** → Center Image

- Scaling **OFF** if you’ve already resized in Photoshop (recommended) → Scale to Fit Media



- Choose the correct printer → Printer: EPSON Epson Stylus Pro 3880
- Paper size/media feeder → Paper Size: US Letter 8.50 by 11.00 inches
- Choose **Printer Settings** → Printer Settings
- Choose the correct paper → Media Type: Ultra Premium Photo Paper Luster
- Color vs. B/W printing → Print Mode: AccuPhoto HD2
- **OFF** always → Color Mode: Off (No Color Management)
- **1440** for final prints → Output Resolution: SuperPhoto – 1440 dpi
- **OFF** for best quality → High Speed, Flip Horizontal, Finest Detail



- **ON** for 16-bit files → 16 Bit Output
- Save to return to Print Window → Save

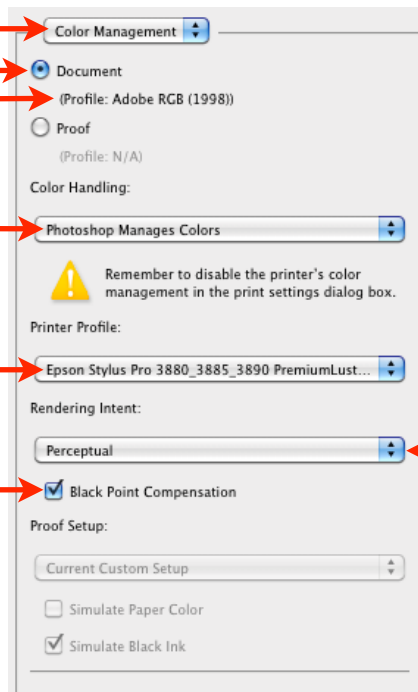
3. Set options for Color Management in the Photoshop Print Window.

- **Color Management**
- Set to **Document**
- Confirm doc profile is Adobe RGB (1998)

- Always set this way

- Choose the correct Printer/Paper ICC profile

- **ON** always

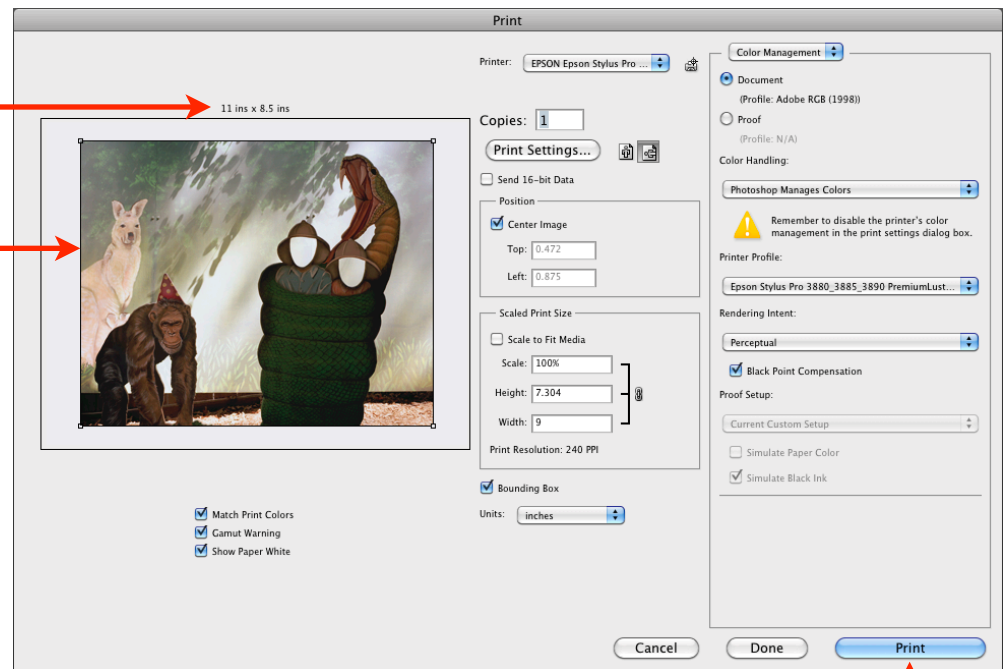


• Choose a Rendering Intent: **Perceptual** vs. **Relative Colorimetric** for best results. Experiment as some pictures will take one better than the other.

4. Check the Preview area, load photo paper in the printer and click **Print**.

- Confirm Paper Size

- Visually confirm the image area vs. margins as well as centering



• Click **Print**, Enjoy!