



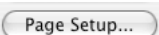
# How to Print Color Accurately through Photoshop CS2 (Mac)

- ❖ This tutorial assumes that you've properly set your image dimensions in Photoshop to fit your page, and that your file is set to a proper resolution of 240ppi. It is assumed that you are using Adobe RGB (1998) as your color working space for all images, and that your monitor has been profiled recently and correctly.

1. Be sure that no matter where your image came from, the embedded profile comes in as Adobe RGB (1998) for your working space. You can verify your file in the lower left hand side of the image window by clicking the  button, then **Show→Document Profile** and you should see this:



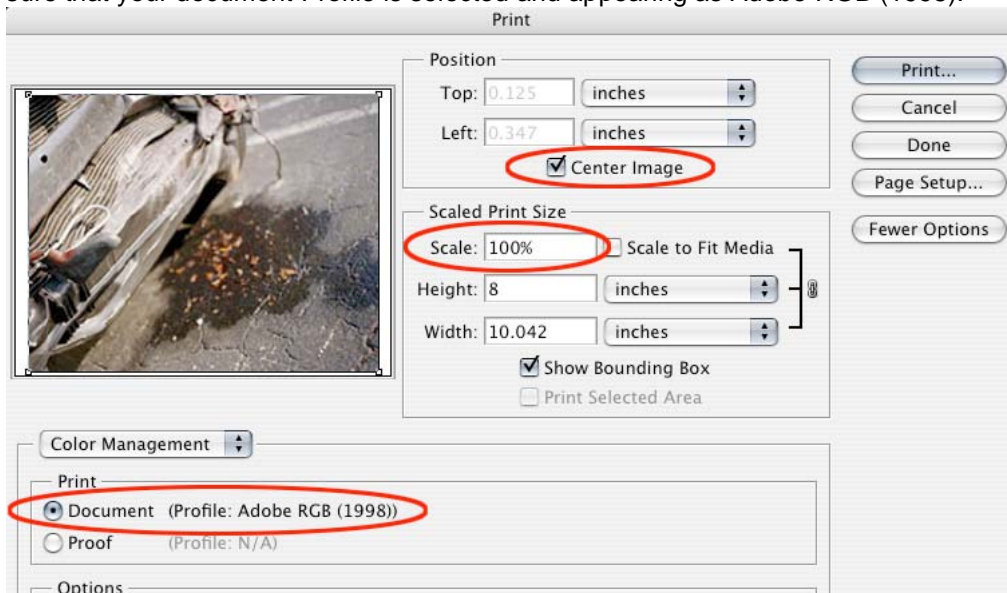
You cannot change the color space here. It is only used to verify which space the file is using. If this checks out, then it is safe to color-correct your file etc. then move on to step 2.

2. Under the **File** menu, choose .
3. When the Print Preview window appears, look in the upper right corner & click the  button.
4. When Page Setup appears, select your correct printer, Paper Size, & Page Orientation. Scale is always 100%.



Click OK: This will send you back to the Print Preview window.

5. In the top half of the Print Preview window, select the “Center Image” checkbox, Scale is 100%, and be sure that your document Profile is selected and appearing as Adobe RGB (1998):



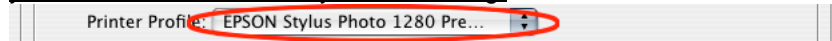
Now for the 2<sup>nd</sup> half of the window...

- In the bottom half of the Print Preview window (the "Options" area), be sure that you've selected the right choice for each of the three following options:

**Color Handling:** Photoshop will do the translation from the color that you see on-screen to the color that can be reproduced by your printer.

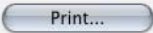




**Printer Profile:** Select the one from the list that matches both your Printer and Paper. In some cases you may also need to specify Matte Black (MK) or Photo Black (PK). If your specific profile does not appear on the list, please email [digitalphotosupport@massart.edu](mailto:digitalphotosupport@massart.edu) and ask to have it installed, stating what lab you were in, and machine you were using.

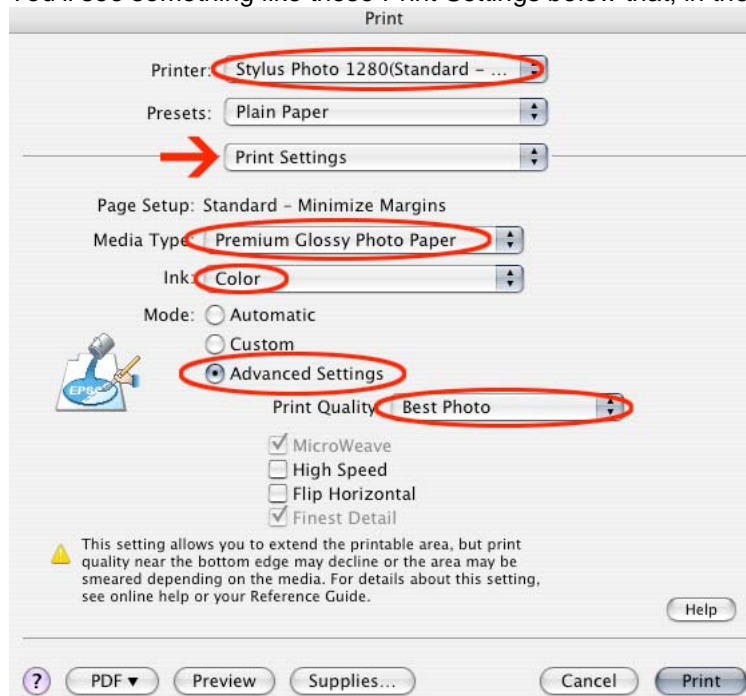


**Rendering Intent:** The two best choices are Perceptual (preserve visual color relationships during color translation) or Relative Colorimetric (preserve more of the original colors during color translation). Turn ON the Black Point Compensation checkbox.



Click the  Button to proceed to the Printer Dialogue Box.

- Once in the Printer Dialogue Box, select your correct printer then click the  dropdown to see the different Options for your Printer. Under that list select . You'll see something like these Print Settings below that, in the box:



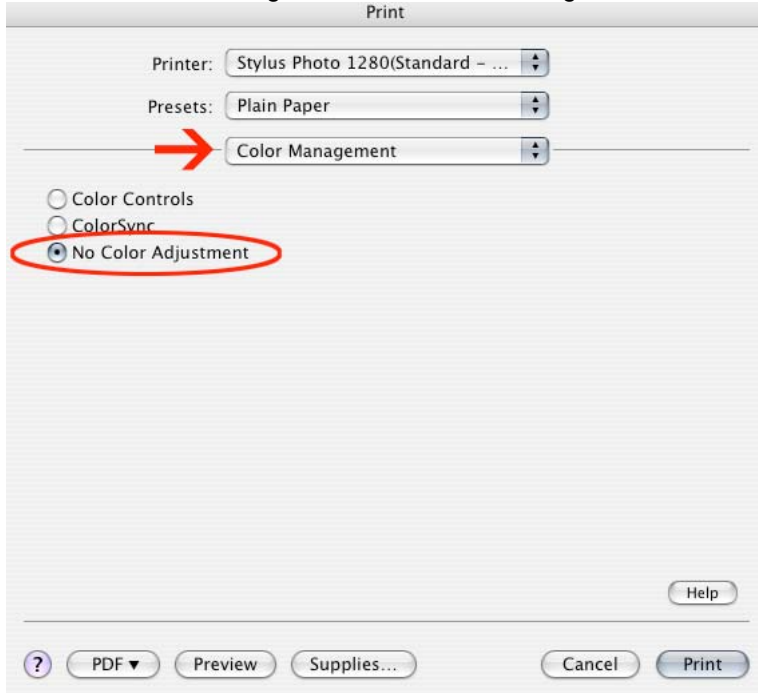
**Media Type:** Select the paper you are using. If it is not listed use the closest match.

**Ink:** Always select Color for color images.

**Mode:** Always select "Advanced Settings" which gives you access to specific printer resolutions etc.

- Print Quality: Only the useful settings (and resolutions) for printing photos are listed here:
  - Photo (720 dpi) – Decent enough for very rough work prints or digital contact sheets.
  - Best Photo (1440 dpi) – Best quality for good work prints and final prints.
  - Photo RPM (2880 dpi) – Usually overkill, wastes more ink & takes much longer to print.
- MicroWeave: Increases print quality for photos, but takes slightly longer to print. Selecting certain papers will sometimes turn it on or off automatically.
- High Speed: or Bi-Directional printing. The print-head lays ink on the paper as it moves in both directions instead of just in one direction. Using this will result in a slight decrease in print quality.
- Flip Horizontal: Don't use this. It's better to do it in Photoshop if you need it.
- Finest Detail: Same as MicroWeave, but for text, solid graphics, and line art.

8. While still in Printer Dialogue Box, click the **Print Settings** dropdown to see the different Options for your Printer, then select the **Color Management** option. You'll See the following choices for Color Management in the area below:



**Color Controls:** Don't use it

**ColorSync:** Don't use it

**No Color Adjustment:** Insures that the printer driver does not do a second color translation on top of the color-ready file coming from Photoshop. There won't be any other options under this setting.

9. Click the **Print** button and enjoy.