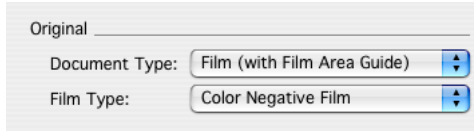
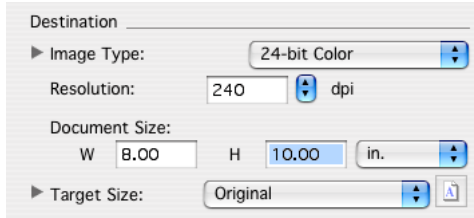


## Making Color Contact Scans on an Epson (v750) flatbed

1. Remove the reflective board from the inside of the scanner's lid.
2. Place the Film Area Guide on the scanning bed.
3. Place your sleeved negatives on the scanning bed face down.
4. If available and without scratching the scanner, press the sleeve against the scanning bed with taped glass.
5. Open Photoshop, and in the menu choose File>Import>Epson v750...
6. At the very top of the Scanner options window look for Mode: and change it to Professional Mode.
7. Under the Original Option, select the following:

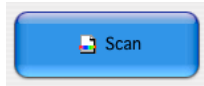


8. Press the Preview button. The scanner will then show you what is on the bed in a Preview window.
9. In the Preview window, drag a rectangle around all the frames in your negative sleeve.
10. Under the Destination Options, select the following:



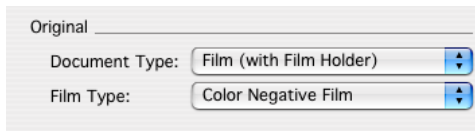
Your Document Size (a.k.a. the original) may vary slightly from what you see here.

11. Press the Scan button. When it's finished, the scanner opens the file in Photoshop for editing and saving.

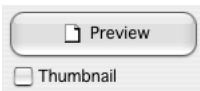


## Scanning Negatives on an Epson (v750) flatbed

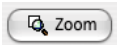
1. Remove the reflective board from the inside of the scanner's lid.
2. Load the negative to be scanned into the correct film holder, emulsion side up (face-down).
3. Place the loaded film holder on the scanning bed. Align the guide corners of the holder and scanner.
4. Open Photoshop, and in the menu choose File>Import>Epson v750...
5. At the very top of the Scanner options window look for Mode: and change it to Professional Mode.
6. Under the Original Option, select the following:



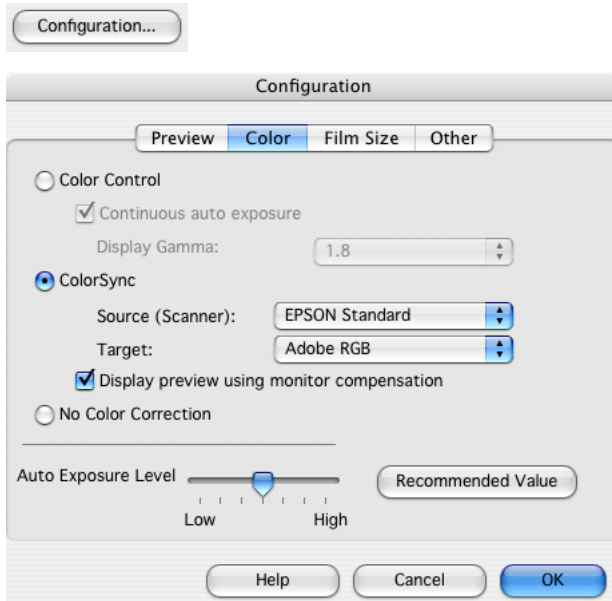
7. Turn off the "Thumbnail" checkbox and Press the Preview button. The scanner will then show you what is on the bed in a Preview window.



8. In the Preview window, drag a rectangle around your chosen frame.
9. If you need to view it closer, press the zoom button in the preview window. Then adjust your scanning frame to be sure you are getting what you need from that frame.

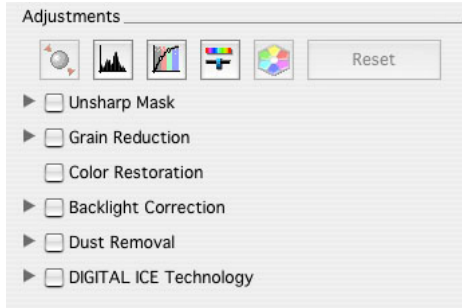


10. Press the Configuration button and then the Color Tab from the following window, set it up as follows:

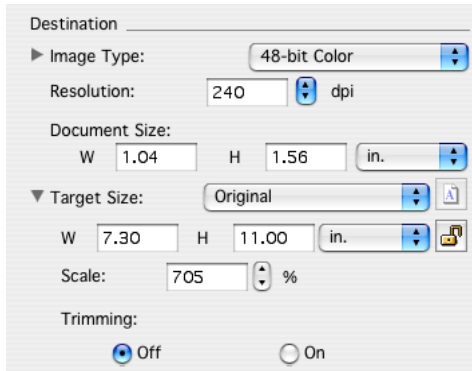


Then press OK.

11. Your Adjustments should be unchecked. Many of these same functions are available in Photoshop so don't worry about them for now.

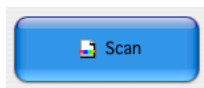


12. Under the Destination Option, select the following:



Your Document Size (a.k.a. the original) may vary slightly from what is shown here.

13. Press the Scan button. When it's finished, the scanner opens the file in Photoshop for editing and saving.

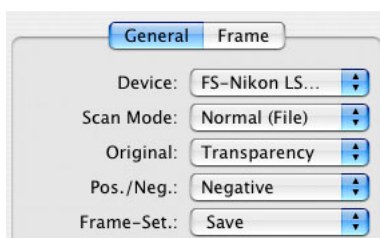


14. In Photoshop, the first thing to do is confirm the image size and resolution, then orient and crop the image. You are now ready to apply tonal/color corrections, spotting, sharpening, and resizing for print.

## Scanning Negatives on the Nikon 9000 with Silverfast

1. Launch Photoshop and turn on the scanner.
2. Load the negative to be scanned into the correct film holder, emulsion side down (face-up).
3. Take note of the top facing side of the film holder, then GENTLY push the film holder into the scanner.
4. In Photoshop, choose File>Import>Nikon Silverfast...
5. You will see two buttons in the main silverfast window (General & Frame).

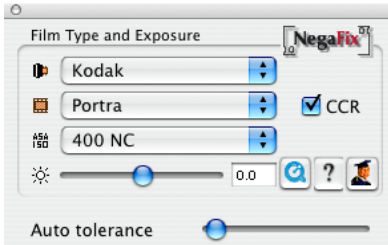
Choose General first and these options:



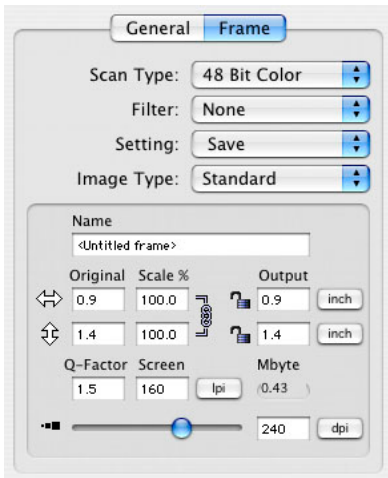
6. In the preview window look at the column of tools and click this button to preview all thumbnail frames:



7. The Overview window appears, click the frame you'd like to scan and then press OK.  
The scanner will then show you that frame in the Preview window.
8. In the Preview window, drag a rectangle around your chosen frame.  
Then adjust your scanning frame to be sure you are getting just the image from that frame.
9. In the Negafix window, choose the correct Film type:



10. Click the Frame button and check your scan settings:



11. Click the Auto adjust button then the Histogram button to tweak the incoming image.



12. Click the Scan button. You'll be prompted to name and save your file.
13. After scanning, press the Quit button and you'll be back in photoshop where you can now open the saved file.